

Davina Jackson

Close to the Sun

15 March – 7 April 2019

London born artist, Davina Jackson, attended Central St. Martins and Byam Shaw art schools before being awarded a Post Graduate Diploma in Fine Art from The Royal Academy School of Art in 1997. Since then she has had many exhibitions, most notably at the Pontone Gallery, Albemarle Gallery, Boundary Gallery and The Discerning Eye exhibition at The Mall Galleries. This is a unique opportunity to view a comprehensive solo show of new works.

Davina Jackson makes paintings of human figures, pared down to an essential, schematic abstraction. These expressive iterations of dynamic form are derived from a personal iconography of classical allusion and allegory. The images are shaped from the elemental material of the palette, suggestive of archaeological excavation and unveiling. They inhabit a world of rich colour and texture, where vibrant, earthy hues combine with bone-whites, tinted greys and chalky creams.

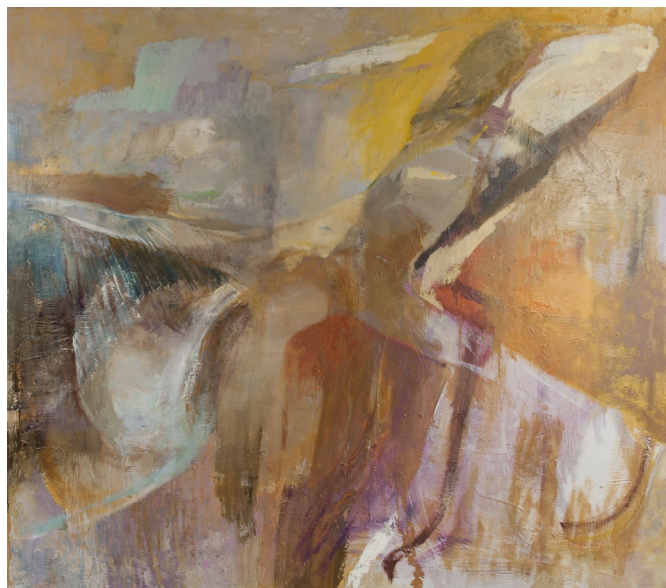
Harmonious colour combinations drive the compositions, punctuated by strategic, contrasting accents. Hers is a highly-wrought surface, articulated by the bold application of films of clotted and slick oil paint, sometimes translucent - sometimes opaque, that cloak, mask or reveal the subject. Graphic and gestural handling underlines the nature of the content, emphasising its emotive weight.

Jackson's figure arrangements bring to mind Picasso, her simple refinements of underlying form echo Moore. She acknowledges her interest in, and debt to, the 20th century Italian artists Marini, Sironi, Martini and Carra. Her work is steeped in the humanist tradition of 20th century modernism.

The story of Icarus is a recurrent theme. His falling image features in several paintings, operating as both symbol and compositional device. The paintings are theatrical. Subjects are arranged and displayed in a painted arena, a dramatic space in which to promote varying themes, typically of human encounter, interaction and solitude. This is where the artist lays out and considers the 'intimate relationships and emotional states' important to her.



The Judgment of Solomon II | 2018 | Oil on canvas | 40 x 33 cm (15.5 x 13 in)



Discovering Icarus | 2018 | Oil on canvas | 152 x 172 cm (60 x 67.5 in)

Pontone

GALLERY

DAVINA JACKSON

Born in London, 1971

Education

- 1990–91 Foundation in Art and Design, Central/St Martins
1992–94 B.A. (Hons) Fine Art - Painting, The Byam Shaw School of Art
1994–97 Post Graduate Diploma - Fine Art, Royal Academy Schools

Selected Exhibitions

- 2019 Close to the Sun, Pontone Gallery, London
2018 The Discerning Eye, Drawing Bursary, Mall Galleries, London
British Art Fair with Boundary Gallery, Saatchi Gallery, London
British Painters | Imagined Worlds, The Pontone Gallery, London
2017 The Woland Club Art Gallery, Porto Piccolo, Trieste
Charity Exhibition for the Stroke Association, The Coningsby Gallery, London
Art London
Winter Show Part 2, The Albemarle Gallery, London
2016 A Sculptor in Paint, The Albemarle Gallery, London
Highgate Contemporary Art Gallery, London
2015 Summer Exhibition, The Royal Academy, London
New English Art Club, Mall Galleries, London
2014 Microtopia, Kingsgate Gallery, London
The Discerning Eye, Drawing Bursary, Mall Galleries, London
2013 Kingsgate Studio Gallery, London
Summer Exhibition, The Royal Academy, London
2012 International Jewish Artist of the Year Show, Boundary Gallery, London
Hare Styling, Dorchester Hotel, London
Kingsgate Studio Gallery, London
2009 Art London, London
2007 Art London, London
2006 Gallery Artists, Boundary Gallery, London
Art London, London

Collections

- | | |
|-----------------------|-------------------------------------|
| Barnet Council | The Mayor of Kensington and Chelsea |
| Chevron PLC | |
| The Cromwell Hospital | Oceana Investment Partners |
| Fenton Arts Trust | Stonehage Fleming |
| Agi Katz | Tavistock Centre |
| Leverhulme Trust | |



Conversation | 2018 | Mixed media on paper | 14 x 19 cm (5.5 x 7.5 in)



The Minotaur's Last Day | 2018 | Mixed media on paper | 19 x 14 cm (7.5 x 5.5 in)