

SOOWHAN CHOI

Born in Gyeongju, South Korea, 1972

Professor at Chugye University for the Arts

Education

2004–2006 M.F.A. The School of the Art Institute of Chicago

1993–1998 B.F.A. ChuGye University for the Arts, Seoul

Selected Exhibitions

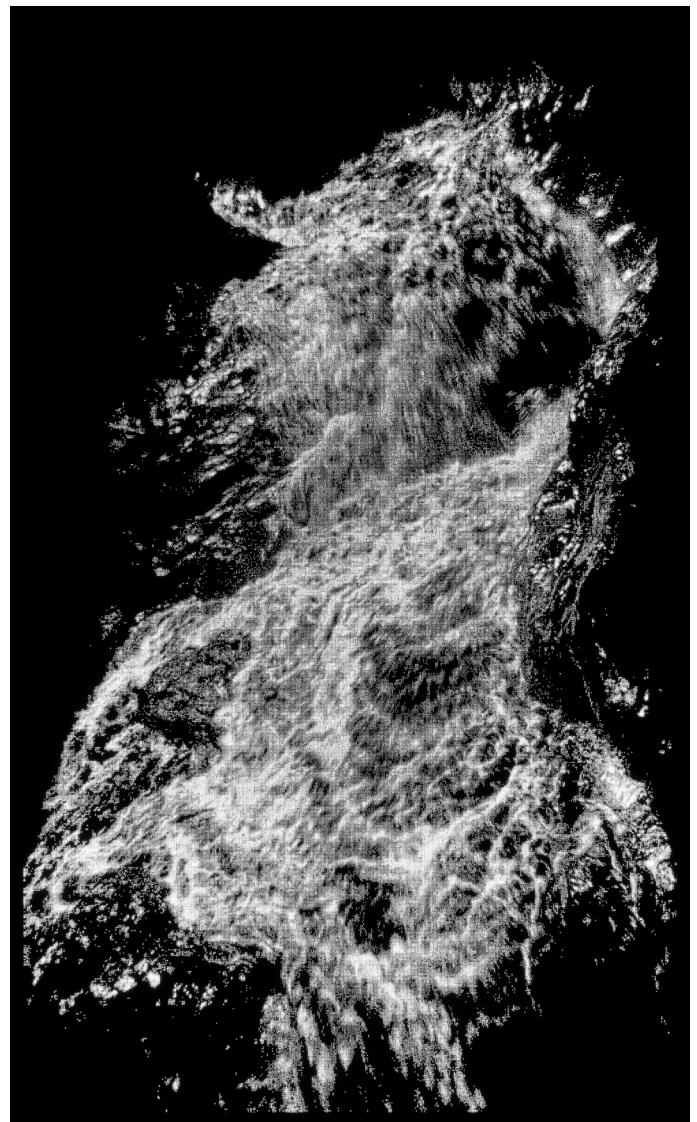
- 2018 Abu Dhabi Art, Manarat Al Saadiyat, Abu Dhabi
KIAF 2018, COEX, Seoul
- 2017 Beautiful Winter, Lotte Gallery, Daejeon
Media Art in Ulsan, Ulsan Culture Art Centre, Ulsan
Responds to Light and Sound, Danwon Art Museum, Ansan
The 35th Korea Galleries Art Fair 2017, PYO Gallery, Seoul
- 2016 How to Keep Winter, Shinsegae Gallery, Incheon
Walk in Emptiness, PYO Gallery, Seoul
The Traces of 10 Years/The Future of 10 Years, Cheongju
Art Studio, Cheongju
- 2015 Fall, GUM BO SUNG ART, Seoul
From Dot, Makeshop Art Space, Paju
Walk in Emptiness, Gallery Lee & Bae, Busan
Light & View, Gallery KUNST, Daegu
BLUE, Gallery Lee & Bae, Busan
Art Busan, BEXCO, Busan
Art Gyeongju 2015 Special Exhibition, HICO, Gyeongju
- 2014 DREAMLAND, Yangpyeong Art Museum, Yangpyeong
Prologue 2014, MakeShop Art Space, Paju
LANTERN FESTIVAL, Cheonggyecheon, Seoul
MakeShop Top10, MakeShop Art Space, Paju
SeMA's New Acquisitions 2013, Seoul Museum of Art, Seoul
- 2013 Winter Project_ALIVE ART MUSEUM, Yangpyeong Art
Museum, Yangpyeong
Art•Vision, Gwangju Biennale Exhibition Hall, Gwangju
The Enjoy Encounter, Pangyo
Pyeong Chang Biennale, ANGVA Expo Gallery, Gangwon
Museum + Summer Vacance, Shinsegae Gallery, Incheon
- 2012 ILLUMINATION-Light in Today's Art, Seoul Arts Centre, Seoul
Emptiness, Yoo Art Space, Seoul
CheonMa Opening Exhibition, Cheonan
CHEONGDAM ART FAIR, Art Space Who, Seoul
KIAF 2012, COEX, Seoul

Collections

Daegu MBC, Daegu / Dongseo University, Busan
FAWOO Technology, Gyeonggi-do / Galesburg Civic Art Centre,
Galesburg, Illinois / I'Park Suwon City Museum, Suwon
Jeju Museum of Contemporary Art / Michael Aram, Inc., New York
National Museum of Modern and Contemporary Art, Government Art Bank
Ocean Hills Country Club, Cheongdo / Seoul Museum of Art, Seoul
Targetti Sankey S.P.A., Florence / VOA Associates, Inc., Chicago



Emptiness – Ansan 02 | 2018 | LED Laminate | 97 x 145.5 x 8 cm (38 x 57 x 3 in)



Emptiness – Waterfall | 2018 | LED Laminate | 204 x 124 x 10 cm (80.5 x 48.5 x 4 in)